



JONES LANG
LASALLE®

Real value in a changing world

Maritime House | Old Woolwich Road | Greenwich | SE10



The Royal Park and National Maritime Museum are close by and central Greenwich with its historic buildings, busy market, and excellent choice of cafes, restaurants, traditional pubs, thriving micro-brewery, art house cinema and shops are located within a short walk.



Apartments come fitted with Video Door entry and wired for an Intruder Alarm System and for Opus multi room AV system.

Transport links are well catered for by all means of transport. London Bridge, Waterloo and Charing Cross are all accessible by overground from Maze Hill station, Canary Wharf is served by the DLR from Cutty Sark. There are also excellent road links.



- A stunning new development of one, two and three bedroom apartments located close to central Maritime Greenwich
- Each apartment has a balcony, terrace or inset balcony
- Oak flooring with under floor heating
- Video entry system
- The high specification kitchens includes oven/hob/extractor/dishwasher/fridge/freezer/microwave and washer/dryer
- The bathrooms are fitted with modern white bathroom suites with contemporary vanity units and tiling
- Apartments come fitted with Video Door entry and wired for an Intruder Alarm System and for Opus multi room AV system

Energy Efficiency Rating		Environmental Impact (CO ₂) Rating	
Current Rating	Target Rating	Current Rating	Target Rating
A	A	84	85
B	B		
C	C		
D	D		
E	E		
F	F		
G	G		

England & Wales EU Directive 2002/91/EC

Floorplans

First Floor

Flat 1

Approx Gross Internal Floor Area 699 sq ft

Flat 2

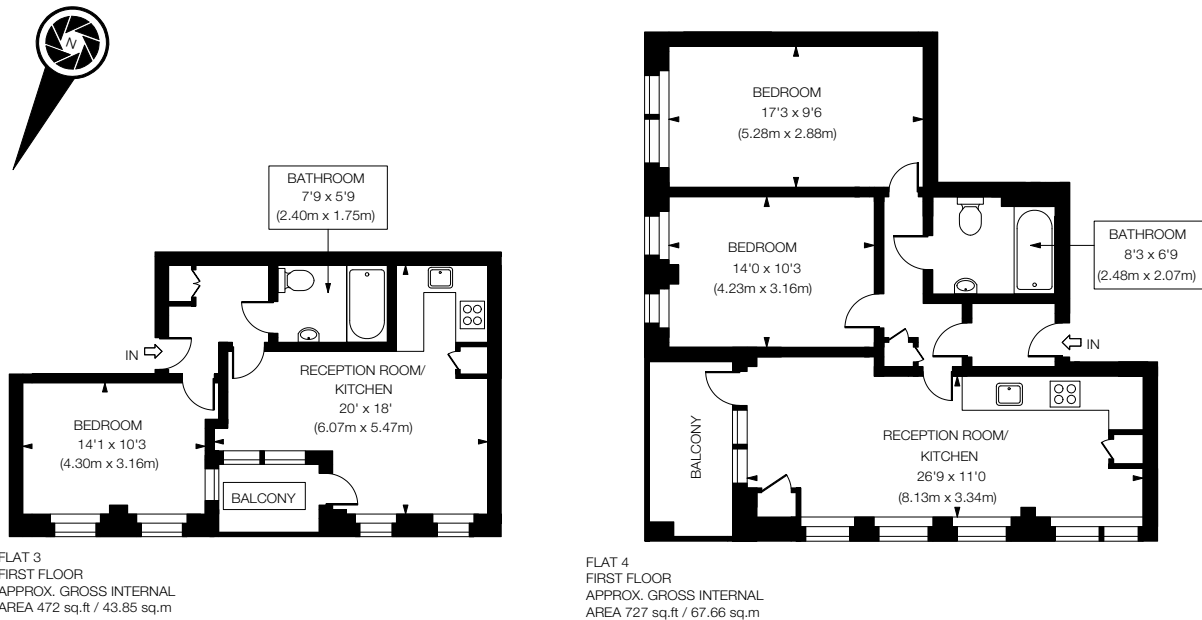
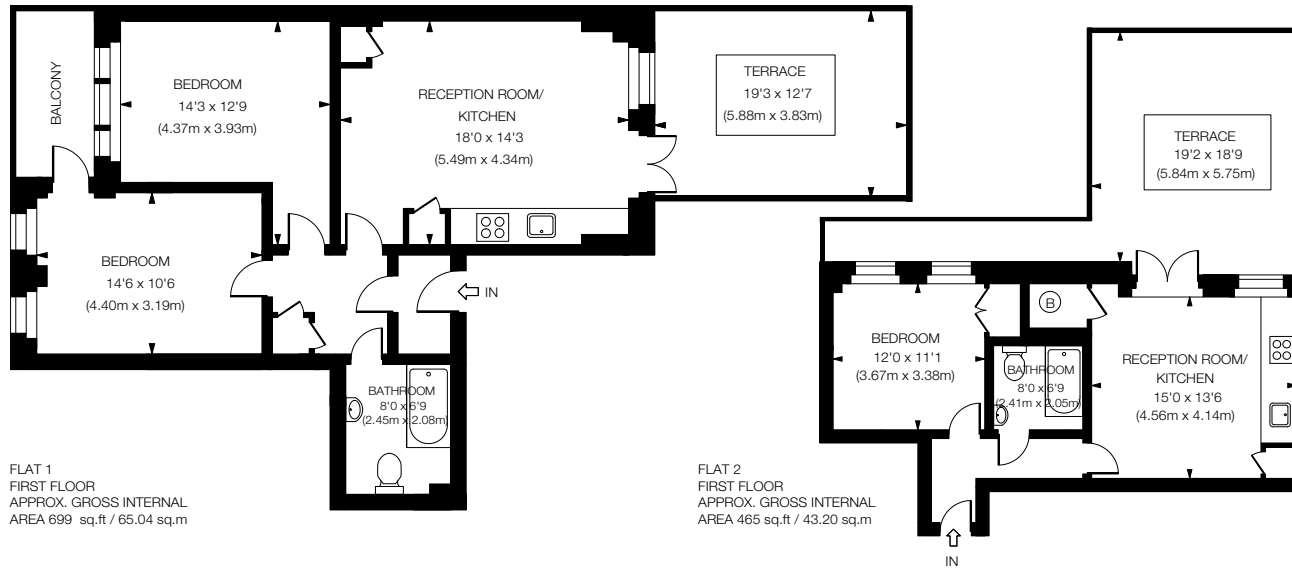
Approx Gross Internal Floor Area 465 sq ft

Flat 3

Approx Gross Internal Floor Area 472 sq ft

Flat 4

Approx Gross Internal Floor Area 727 sq ft



Floorplans

Second Floor

Flat 5

Approx Gross Internal Floor Area 713 sq ft

Flat 6

Approx Gross Internal Floor Area 939 sq ft

Third Floor

Flat 7

Approx Gross Internal Floor Area 698 sq ft

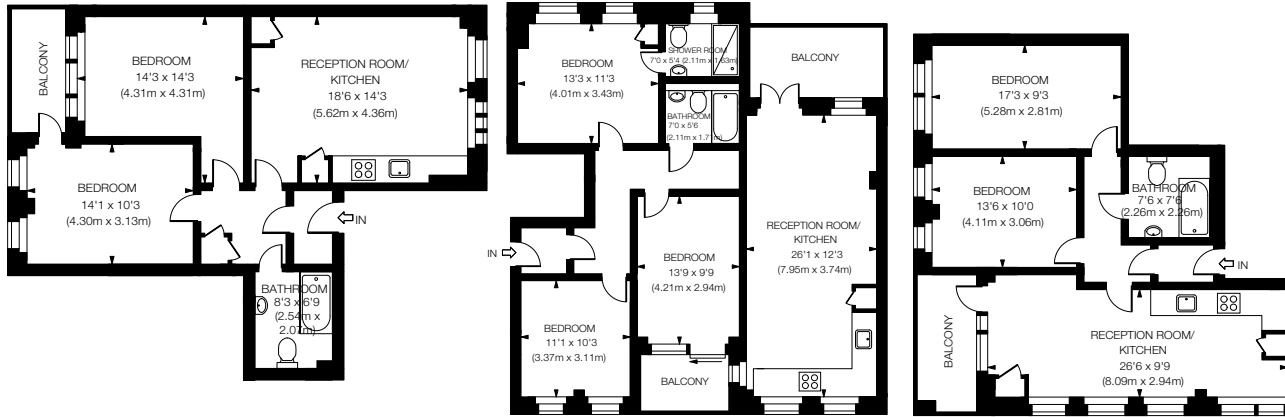
Flat 8

Approx Gross Internal Floor Area 1345 sq ft

Flat 9

Approx Gross Internal Floor Area 865 sq ft

MISREPRESENTATION ACT: The particulars in this brochure have been produced in good faith, are set out as a general guide and do not constitute the whole or part of any contract. All liability in negligence or otherwise, arising from the use of these particulars is hereby excluded. July 2011



FLAT 5
SECOND FLOOR
APPROX. GROSS INTERNAL
AREA 713 sq.ft / 66.28 sq.m

FLAT 6
SECOND FLOOR
APPROX. GROSS INTERNAL
AREA 939 sq.ft / 87.37 sq.m

FLAT 7
SECOND FLOOR
APPROX. GROSS INTERNAL
AREA 698 sq.ft / 64.89 sq.m



FLAT 8
THIRD FLOOR
APPROX. GROSS INTERNAL
AREA 1345 sq.ft / 125.15 sq.m

FLAT 9
THIRD FLOOR
APPROX. GROSS INTERNAL
AREA 865 sq.ft / 80.35 sq.m

